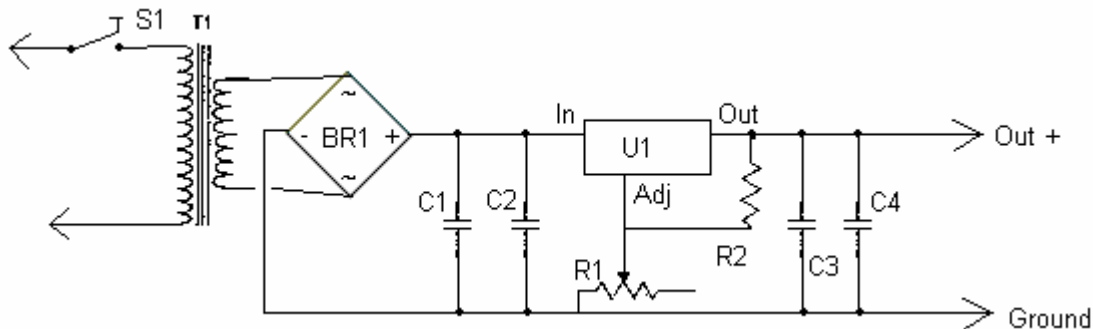


Power Supply

When working with electronics, you always need one basic thing; power. This power supply is great for powering all kinds of electronic projects. It produces a well filtered, variable 1.2-30 volts at 5 amps. It is easy to build and the parts are relatively easy to find.

Schematic



Parts:

Part	Total Qty.	Description
C1	1	14000uF or 10000uf 40 VDC Electrolytic Capacitor
C2	1	100uF 50Vdc Electrolytic Capacitor
C3	1	0.1uF Disc Capacitor
C4	1	0.01uF Disc Capacitor
R1	1	5K Pot
R2	1	240 Ohm 1/4 W Resistor
U1	1	LM338K 1.2 to 30 Volt 5 Amp Regulator
BR1	1	10 Amp 50 PIV Bridge Rectifier
T1	1	24 V 5 Amp Transformer
S1	1	SPST Toggle Switch
MISC	1	Wire, Line Cord, Case, Binding Posts (for output)

Notes:

1. The regulator comes in a TO-3 case and **MUST** be used with a LARGE heatsink. You may want to mount a small fan to blow air across the regulator (I did).
2. The filter capacitor is large. It won't fit on any board so bolt it to the case.
3. You can, of course, add a volt and amp meter.
4. Since this project operates from 120 VAC, you must include a fuse and build the project in a case.